

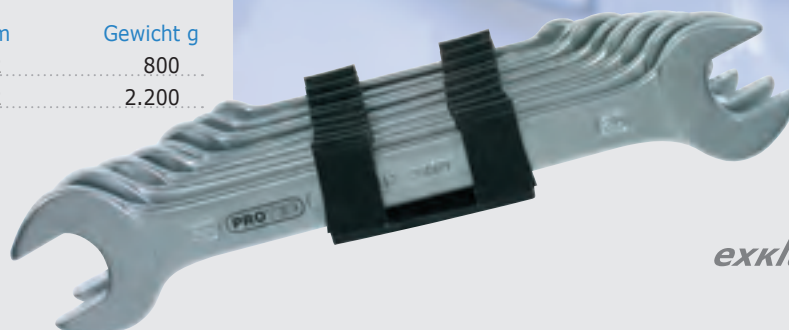
Schlüsselsätze DIN

Aus Chrom-Vanadium-Stahl.
Lieferung mit Kunststoffhalter.

Doppelmaulschlüssel DIN 3110

- DIN 3110 Doppelmaulschlüssel 8-teilig,
(6x7/8x9/10x11/12x13/14x15/16x17/18x19/
20x22 mm)
- DIN 3110 Doppelmaulschlüssel 12-teilig,
(6x7/8x9/10x11/12x13/14x15/16x17/18x19/
20x22/21x23/24x27/25x28/30x32 mm)

Best. Nr.	Teile	SW mm	Gewicht g
280220	8	6 - 22	800
280222	12	6 - 32	2.200

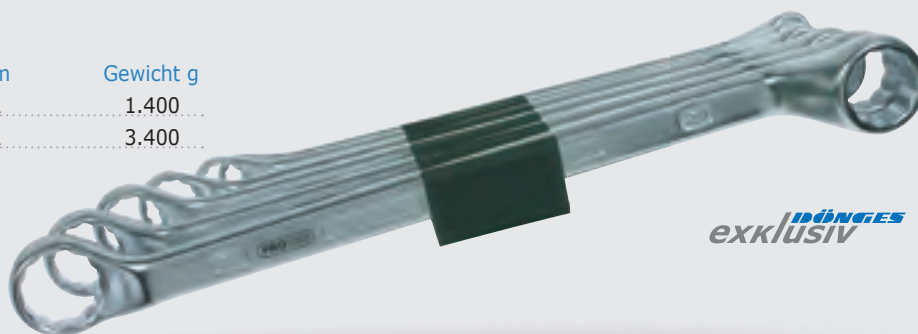


DOENGES
exklusiv

Doppelringschlüssel DIN 838

- DIN 838 Doppelringschlüssel 8-teilig,
(6x7/8x9/10x11/12x13/14x15/16x17/18x19/
20x22 mm)
- DIN 838 Doppelringschlüssel 12-teilig,
(6x7/8x9/10x11/12x13/14x15/16x17/18x19/20x22/
21x23/24x27/25x28/30x32 mm)

Best. Nr.	Teile	SW mm	Gewicht g
280224	8	6 - 22	1.400
280226	12	6 - 32	3.400

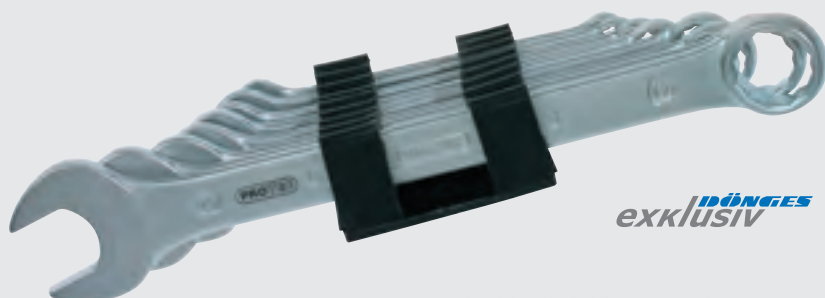


DOENGES
exklusiv

Maulringschlüssel DIN 3113

- DIN 3113 Maulringschlüssel 8-teilig,
(8/9/10/11/13/14/17/19 mm)
- DIN 3113 Maulringschlüssel 12-teilig,
(6/7/8/9/10/11/12/13/14/17/19/22 mm)

Best. Nr.	Teile	SW mm	Gewicht g
280228	8	8 - 19	500
280230	12	6 - 22	2.000



DOENGES
exklusiv